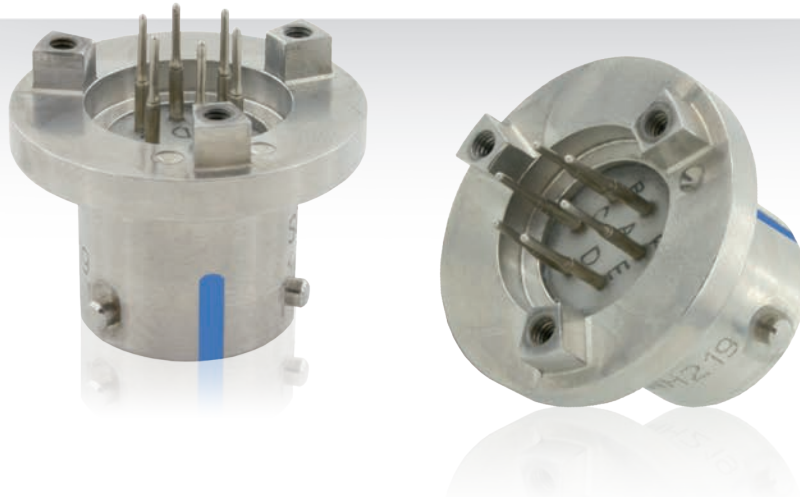


# All Circular Series Hermetic Receptacles with Stand-offs

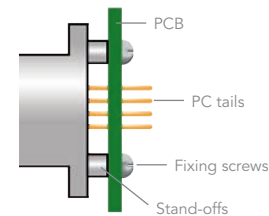


## Hermetic Connectors with Stand-offs

Easy and robust PCB mount feature for any circular hermetic receptacle.

**User friendly  
Easy to assemble**

- 3 fixing screws.  
No need of additional PCB fixing tool when soldering the contacts.



**Adapted to harsh  
environment**

- Stand-offs directly machined into the connector.  
Excellent grounding of the PCB to the connector shell through the stand-offs.  
Excellent vibration and shock resistance: PC tail to PCB stresses are eliminated by the stand-offs.

**Compact**

- Hermetic receptacle compact design maintained with a profile smaller than the double flange version.